



Giving
Hope
Today

Ocean Crest Community Ministries Strategic Plan

“TRANSFORMATION, FROM THE INSIDE OUT”

LAUNCHED MARCH 2017

REVIEWED & UPDATED: MARCH 2018

REVIEWED & UPDATED: DECEMBER 2019

2020 Strategic Stakeholders

<u>Church</u>	<u>Employees & Volunteers</u>	<u>Program Review</u>	<u>Leadership Team</u>	<u>Mission Board</u>
Congregational survey	• Thrift Store	• Thrift Store:	• Sue Moen	• Carol McMurdo
<u>Customer Survey</u>	• Evergreen Shelter	• Evergreen Shelter	• Lona Croissant	• Doug Vater
• Thrift Store	• CR Lighthouse	• CR Lighthouse	• Michael Winter	• Joanne Hart
• Evergreen Shelter	• PH Lighthouse	• PH Lighthouse	• Darlene O'Neil	• Hazen Taylor
• CR Lighthouse	• Dinner Bell	• Dinner Bell	• Patricia Roed	• Violet Hopkins
• PH Lighthouse	• EDS	• EDS	• Connie Preston	• Keith Hopkins
• Dinner Bell	• Other's	• Other's	• Violet Hopkins	
			• Keith Hopkins	

Table of Contents

1. INTRODUCTION

- 1.1 Brief History
- 1.2 Overview of Ministries
- 1.3 Organizational Chart
- 1.4 Strategic Planning Work Flow

2. STRATEGIC ANALYSIS

- 2.1 Assessment Model – SWOB Analysis
- 2.2 Strengths and Weaknesses – Internal
- 2.3 Opportunities and Barriers – External

3. STRATEGY FORMATION

- 3.1 Core Values
- 3.2 Vision and Mission Re-Visited
- 3.3 Critical Issues
- 3.4 Strategic Goals

4. IMPLEMENTATION PLAN

- 4.1 OCCM Strategic Planner
- 4.2 Action Plans

5. APPENDICES



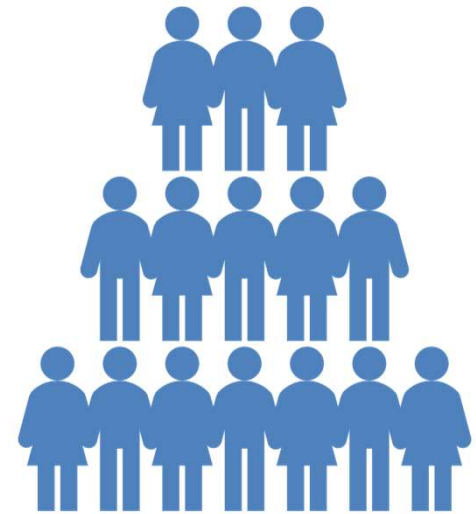
Introduction

Planned change is a conscious, intentional, collaborative effort, empowered by the Holy Spirit to improve the life and ministry of the Ocean Crest Community Church and the people we serve through prayer and valid knowledge.

1.2. Overview of Ministries (Campbell River)

- Ocean Crest Community Ministries is a ministry unit of The Salvation Army, and oversees ministry in Campbell River and Port Hardy. **The Ministry Unit** uses a “Mission Board Model,” which is a team of volunteer leaders. The primary function of the Mission Board is to align leadership and decision making around three main areas:
 - **Pastoral Care:** The Director of Pastoral Care works along side the Corps Officer/Pastor in areas of shepherding, mercy seat counselling and community care ministry. He/she ensures that training events are conducted for Mercy Seat counseling, Pastoral Care, Community Care Ministries, and meets with CO(s) regularly to review all pastoral care issues.
 - **Business Administration:** The Director of Business Finance, works along side the Corps Officer/Pastor in areas of property maintenance, financial stewardship, fundraising, Christmas kettles, special projects, contract management and purchasing.
 - **Program:** The Director of Programming works along side the Corps Officer/Pastor in areas, including Young People programs, women, men, seniors, fellowship, ushers/greeters, Bible study/prayer, community services and outreach/evangelism.

The Mission Board also serves as the “**Pastoral Care Council.**” The Mission Board meets monthly with possible additional meetings at the call of the chair. There are two congregational meetings per year, as well as participation in “Congregational Health Assessments”, and the Annual Corps Membership Review & Strategic Plan.



1.2. Overview of Ministries (Campbell River)

- **Ocean Crest Community Church:** Located at 291 McLean Street, Campbell River, OCCC is the hub of The Salvation Army ministries in Campbell River and Port Hardy. OCCC is the main administrative office with three (4) fulltime employees and three (3) part time employees, which includes two Corps Officers, Administrative Assistant, Human Resources and Finance Assistant, Supportive Housing Services Manager and Janitor.
- The church is home to over 100 congregational members, and is home base to several ministries:
 - **Children's Ministry:** The children's ministry is led by a team of dedicated volunteers. Currently there are two major areas of focus:
 - **Sunday School:** This occurs three times per month and is facilitated by church volunteers.
 - **Youth Group:** The youth group meets every Thursday and draws in youth, from grades 7-12 from the surrounding neighbourhood. The youth group operates mainly between September and June of each year.
 - **Messy Church:** Messy Church is designed to reach families who are not "churched" as well as those who are looking to explore faith and Christian community in a new way. It is a once a month gathering, often on a weeknight from 4–7 p.m. that creatively engages all who are gathered in a Bible story or theme.
 - **Seniors Ministry:** There are various activities throughout the year that engage our seniors, including; 50+ luncheon which occurs monthly from September – June.

1.2. Overview of Ministries (Campbell River)

Women's Ministry: There are a number of ongoing initiatives that fall under women's ministry. There are currently two main focuses: Bible study group and women's fellowship night. There are various activities throughout the year that the Women's Ministry undertake, including: hampers, sunshine bags and visitation.

Men's Ministry: There are a number of ongoing initiatives that fall under men's ministry, but there is currently a weekly gathering, which transitions into a walking group during the summer months. There are various activities throughout the year that the men's ministry undertake, including: Bible studies, adopt a family, movie night, and other men related fellowship events.

Fellowship Committee: Fellowship is very important to OCCC congregational life, and as such a fellowship committee meets annually to plan events that enrich the lives of the people.

Emergency Disasters Services: Under the umbrella of Ocean Crest Community Ministries, and directly connected to the Divisional Headquarters EDS department, OCCM EDS consist of one towable EDS trailer, which arrived in 2016. The program is lead by an experienced EDS coordinator and a dedicated team of volunteers.

Tax Services: Throughout the year, two dedicated volunteers, offer tax advice and services to guests. During tax season, (end of Feb – end of Mar) more that 700 tax returns are completed for guest.

1.2. Overview of Ministries (Campbell River)

- **Dinner Bell:** Ocean Crest Community Church is the home to the “Dinner Bell”. The program is lead by a dedicated Chef and student body. This is a partnership with VIHA, which provides participants basic cooking skills in a year-long training program. In conjunction with this program, OCCC is the distribution center for meals to guest.
- **Family Thrift Store:** Located at 100-1100 Homewood Road, provides a source of low-cost goods and clothing to the community. Provides employment and volunteer opportunities; and is a source of programing funding for the wider community of Campbell River and Port Hardy.
- **New Beginnings Thrift Store:** Located at 201-2266 S. Island Hwy, provides a source of low-cost goods and clothing to the community. Provides employment and volunteer opportunities; and is a source of programing funding for the wider community of Campbell River.
- **Evergreen Shelter:** The Emergency Shelter Program (“ESP”) supports emergency shelters, drop-in centres and local housing registries to provide Services to meet their guest’ immediate needs for overnight accommodation, basic nutrition and hygiene and to provide gateway Services to help their guest break the cycle of homelessness. The Evergreen shelter provides 22 beds (6 female and 16 male) through out the year. The demographic of the guest, includes the chronic homeless, people in transition from one community to another, individuals with mental illness, and addiction associated issues.
- **Second Stage Housing:** OCCM oversees six rental units that are a available at low cost for guest transitioning from a recovery program,.

1.2. Overview of Ministries (Campbell River)

2020-01-01

- **BC Housing (Extreme Weather Response)** From 01 November – 31 March each year, provides shelter up to 6 persons. The Extreme Weather Response (EWR) program funds community-based services to provide extra emergency shelter spaces during periods of winter weather which threaten the health and safety of individuals who are absolute homeless or at risk of homelessness. EWR is designed to fund time-limited, temporary shelter spaces in communities where there is not enough emergency shelter capacity during the winter season
- **Community & Family Services:** Located at 1381 Cedar Street, provides a wide range of services to guest including the chronic homeless, people in transition from one community to another, individuals with mental illness, addiction associated issues, as well as low income families. Services include; hot lunch Monday to Friday, shower facilities, prayer support, clothing and food assistance.
- **Ministry of Social Development and Poverty Reduction – Third Party Administration.** Recipients of British Columbia Employment and Assistance (BCEA), who have demonstrated disruptive or hostile behavior and/or are prohibited from receiving services in office; have demonstrated an inability to manage their own affairs or have legal restrictions on their access to Ministry Offices.

1.2. Overview of Ministries (Port Hardy)

2020-01-01

Centre of Hope: Located at Port Hardy, provides a wide range of services to guest including the chronic homeless, people in transition from one community to another, individuals with mental illness, addiction associated issues, as well as low income families. There are four (4) employees attached to this location and during operations there are a minimum of three (3) employees on site Services include; hot lunch Monday to Friday, shower facilities, prayer support, clothing and food assistance; Clothing Donations on free table; Internet (2 computers available in the resource room).

LSS (Legal Services Society) worker is in the building Tuesdays and Wednesdays and assists guest in completing legal aid applications, as well as helping guest navigating through the judicial system which also includes court appearances.

Healing Circle – Every Tuesday at 2:00 pm, is co-facilitated by Elders in the community and is First Nations infused – welcome to all comers. There is a light meal provided after group.

(VIHA) Breakfast Club – Monday to Friday from 9:30 to 10:30 am – Island Health specified group members who are actively working on recovery attend this breakfast group. They do a check-in, brief discussion, have a light breakfast, and help out with set up and clean up. It is open to the general public as well.

1.2. Overview of Ministries (Port Hardy)

2020-01-01

AA – 3 AA meetings held at the Centre a week (Tuesdays and Fridays between 12-1) and a home group on Sundays beginning at 7:00 pm

(VIHA) MHAS – Mental Health care worker is in the Centre every Monday morning from 10-12

(VIHA) Nurse Practitioner (Tuesday afternoons (1-4pm) – client access through front desk appointments.

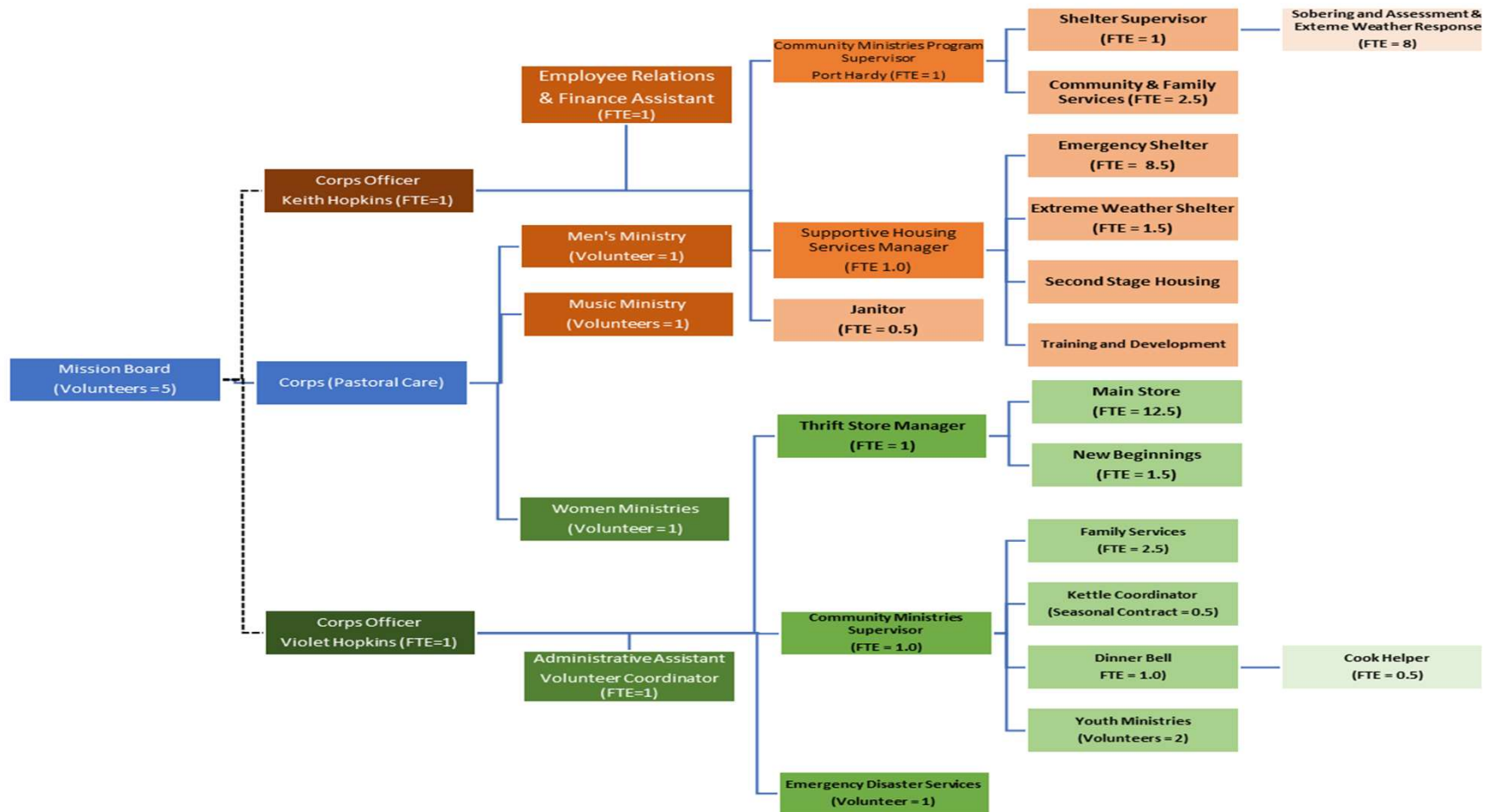
(VIHA) Wellness Clinic– Every Wednesday from 10am-12pm. Focuses on Harm Reduction from a public health perspective. The mandate is to offer Harm reduction services and supports to persons living the Mt Waddington area.

BC Housing (Extreme Weather Response) From 01 November – 31 March each year, which provides shelter up to 10 persons. The Extreme Weather Response (EWR) program funds community-based services to provide extra emergency shelter spaces during periods of winter weather which threaten the health and safety of individuals who are absolute homeless or at risk of homelessness. EWR is designed to fund time-limited, temporary shelter spaces in communities where there is not sufficient emergency shelter capacity during the winter season.

1.2. Overview of Ministries (Port Hardy)

- **VIHA – Sobering and assessment Program** 01 April – 31 Oct each year this location provides shelter for up to six persons has it relates to the “Sobering and Assessment” program. Through this agreement, Ocean Crest Community Ministries will provide a six (6) – bed sobering and assessment program in Port Hardy. This dovetails with the existing Extreme Weather Response (EWR) contract with BC Housing that covers November through March. The Facility improves safety for individuals who may need a safe place for sobering for short-stays (up to twenty-four hours) and who may access related assessment services and supports, including access to food, laundry and linkages to other community services when appropriate. Currently, these community members are frequently directed to police cells, shelters, the emergency department, the street, or to other environments not conducive to sobering. Staff supporting this Program will link community members to other resources, if requested by the individual.
- **Ministry of Social Development and Poverty Reduction – Third Party Administration.** Recipients of British Columbia Employment and Assistance (BCEA), who have demonstrated disruptive or hostile behavior and/or are prohibited from receiving services in office; have demonstrated an inability to manage their own affairs or have legal restrictions on their access to Ministry Offices.

1.3 Organization Chart



1.4 Strategic Planning Workflow

